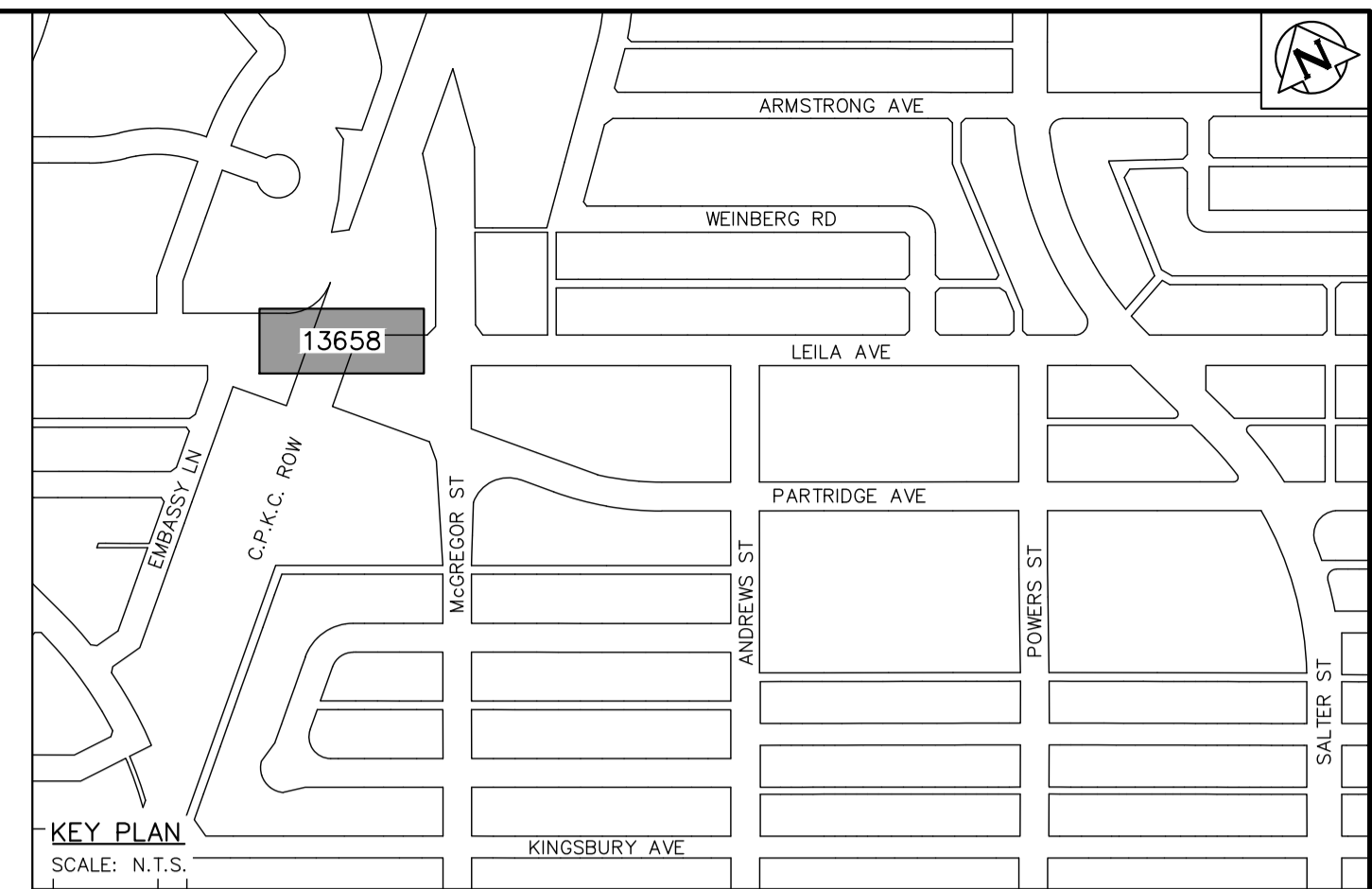


NOTE: CHAINAGES SHOWN ALONG S OF LEILA AVENUE

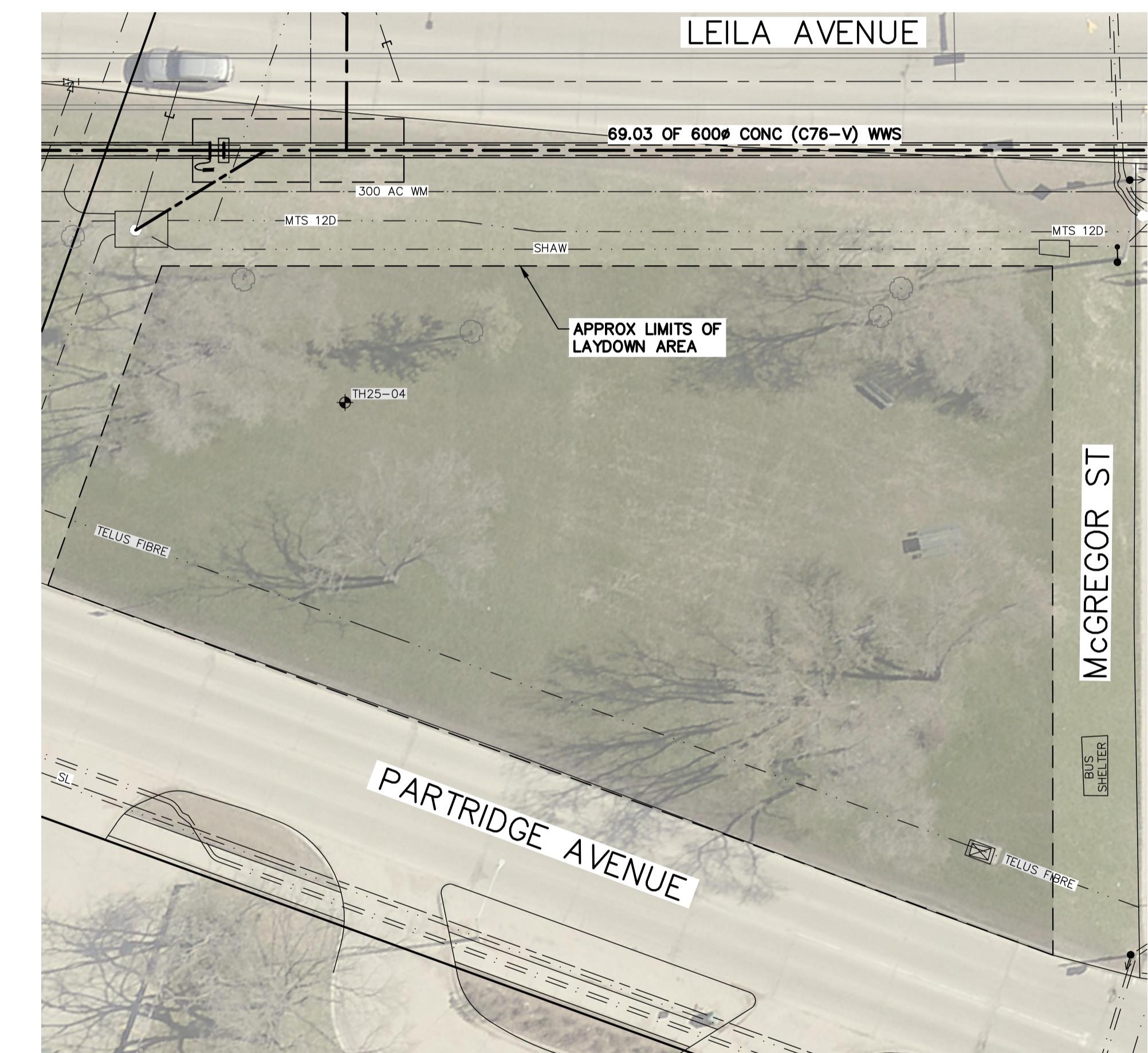
NOTES:

- WHEN INSTALLING PROPOSED WASTEWATER SEWERS ON LEILA AVE TAKE CAUTION WHEN CROSSING EXISTING RESIDENTIAL WATER SERVICES.
- FOR CONCRETE COLLAR DETAIL OF PVC/CONCRETE PIPE TRANSITION SEE DWG. 13685.
- PRIOR TO THE 1200# DROP MANHOLE INSTALLATION THE CONTRACTOR SHALL VERIFY ELEVATION OF EXIST WWS SERVICE AT PROPERTY LINE AND IF EXISTING WWS SERVICE ELEVATION ALLOWS CROSSING OVER THE EXIST 2700# CS, THEN THE MANHOLE SHALL NOT BE INSTALLED.

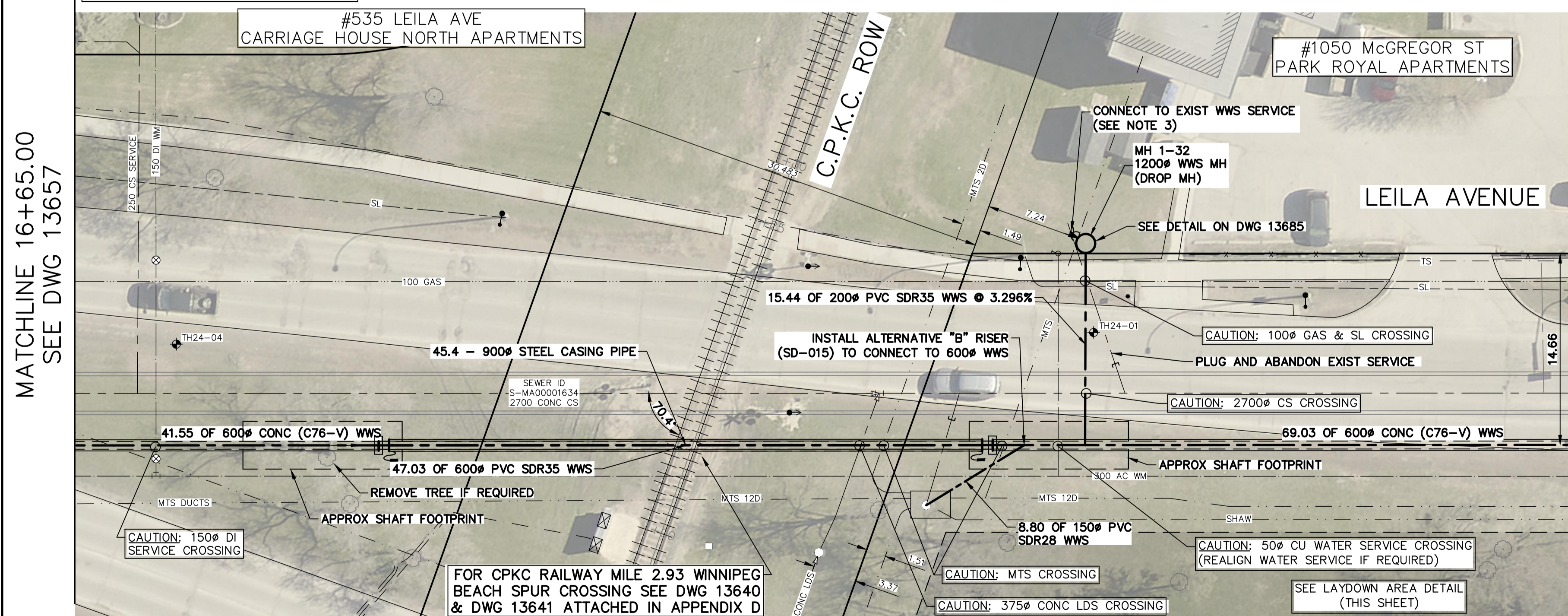


SEWER SERVICE INFORMATION					
ADDRESS	STATUS	SIZE (mm)	COORDINATES AT JUNCTION	COORDINATES AT PROPERTY	REMARKS
#1050 MCGREGOR ST	ABAND	250	N=5534371.24 E=634413.29	UNKNOWN	NONE
#1050 MCGREGOR ST	ACTIVE	250	N=5534384.81 E=634384.21	N=5534395.98 E=634385.48	NONE
-	ACTIVE	150	N=5534390.17 E=634372.69	UNKNOWN	MTS MH DRAIN?
-	ACTIVE	250	N=5534393.82 E=634364.90	UNKNOWN	NONE
#535 LEILA AVE	ACTIVE	250	N=5534415.99 E=634317.54	N=5534440.24 E=634326.82	NONE

SEWER JUNCTION INFORMATION FROM SEWER VIDEO INSPECTION SEWER ID S-MA00001634			
DISTANCE FROM MH ID S-MH00001366	DISTANCE	DIAMETER	CLOCK
-	29.3	250	11
-	81.6	250	1
-	90.2	150	1
-	102.9	250	10
-	135.0	250	10



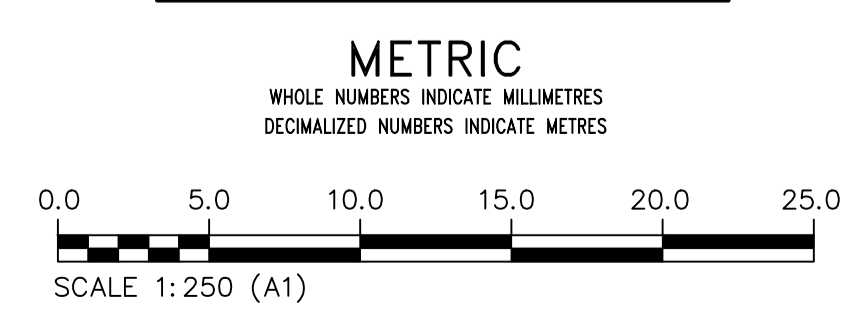
LAYDOWN AREA BETWEEN LEILA AVE AND PARTRIDGE AVE



MATCHLINE 17+80.00 SEE DWG 13659

ENGINEERS GEOSCIENTISTS MANITOBA
Certificate of Authorization
KGS Group
No. 245

FOR INDEX PAGE SEE DWG 13643



WARNING
IF POWER EQUIPMENT OR EXPLOSIVES ARE TO BE USED FOR EXCAVATION ON THIS PROJECT THE CONTRACTOR MUST:
1) NOTIFY THE GAS COMPANY OF THE PROPOSED LOCATION OF EXCAVATION.
2) TAKE PRECAUTION TO AVOID DAMAGE TO GAS COMPANY INSTALLATIONS.
SEE PROVINCIAL REGULATION 210/72 FOR DETAILS

LOCATION APPROVED UNDERGROUND STRUCTURES
SUPV. U/G STRUCTURES COMMITTEE DATE
NOTE:
LOCATION OF UNDERGROUND STRUCTURES AS SHOWN ARE BASED ON THE BEST INFORMATION AVAILABLE BUT NO GUARANTEE IS GIVEN THAT ALL EXISTING UTILITIES ARE SHOWN OR THAT THE GIVEN LOCATIONS ARE EXACT. CONFIRMATION OF EXISTENCE AND EXACT LOCATION OF ALL SERVICES MUST BE OBTAINED FROM THE INDIVIDUAL UTILITIES BEFORE PROCEEDING WITH CONSTRUCTION.

VERTICAL DATUM: CGVD28 (HT2.0 Geoid)
HORIZONTAL DATUM: NAD83 (June 1990), Zone 14

NO.	ISSUED FOR CONSTRUCTION	DATE (YYYY/MM/DD)	MID	BY
0	ISSUED FOR CONSTRUCTION	2026/03/10	MID	

KGS GROUP

DESIGNED BY	MID	CHECKED BY	TLE
DRAWN BY	GEL	APPROVED BY	RBO
SCALE:	HORIZONTAL 1:250	RELEASER FOR CONSTRUCTION	DUANE BAKER
DATE	2026/03/12	DATE	2026/03/12

ENGINEER'S SEAL
ORIGINAL DRAWING SEALED BY:
M.A. IANKOVA-DEDOVA
2026/03/11
CONSULTANT DRAWING NUMBER
C1-17

THE CITY OF WINNIPEG
WATER AND WASTE DEPARTMENT
ENGINEERING SERVICES DIVISION

ARMSTRONG SEWER RELIEF WORKS
CONTRACT 1
LEILA AVENUE
53.6 E OF AMBASSADOR ROW TO
8.2 W OF MCGREGOR STREET

SHEET 17 OF 46
CITY DRAWING NUMBER
13658